

MAHRMM

Michigan Association Healthcare Resource Material
Management

**Active Shooter Incidents:
How Supply Chain Can
Support a Culture of
Safety and Preparedness**



Dennis Fitzpatrick, Facilitator, Safety and Security Manager,
McLaren Lapper

Rob Couturier, Lockout USA

Morris Cotton, CPP, MLS, Sr. System Director of Security,
Beaumont Health

Jason Little, MBA, Regional Administrative Director Supply
Chain, Trinity Health Illinois – Chicago Region

Mary Masson, Director of Public Relations, Michigan Medicine

MAHRMM

Michigan Association Healthcare Resource Material
Management

Active Shooter/Violence Presentation

**Morris Cotton, CPP
System Director of Security
Beaumont Health
May 30, 2019**



LEARNING OBJECTIVES

- Learn how supply chain can plan to prepare and support in an active shooter event.
- Increase knowledge on appropriate internal communication within your organization as well as external to the community
- Develop understanding of staff roles and responsibilities in maintaining a secure environment and in response to an active shooter incident
- Increase understanding of safe zones and secure areas within your facilities

Recent Violent acts in hospitals



Active Shooter on hospital campus



- VIDEO: Dashcam shows wild chase through Dearborn



<https://www.clickondetroit.com/news/video-dashcam-shows-wild-chase-through-dearborn-that-ended-at-beaumont-hospital>

- Individual enters hospital –carrying Molotov cocktails and torch
- sets himself on fire
- Patient enters hospital with hand grenade
- Suicides at healthcare facilities
- Know what actions to expect from responding law enforcement officers

How supply chain can prepare for active shooter event.

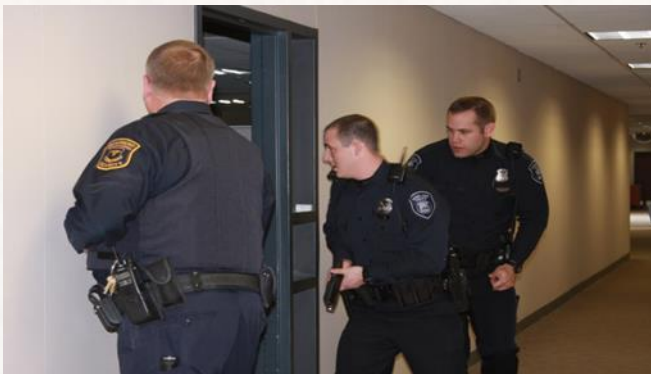
- Attend Workplace Active Shooter Training
 - Run-Hide-Fight
- Gain familiarity with your Emergency Codes and procedures
 - Lockdown policies- Active Shooter – Bomb Threat- Evac Plan
- Complete National Institute Management System (NIMS)
 - 100
 - 200
 - 700
 - 800
 - Review and understand HICS Job Action Sheets

EQUIPMENT/SUPPLY STAGING TEAM LEADER

- Assume the role of Equipment/Supply Staging Team Leader
- Maintain information on the status, location, and availability of equipment and supplies within the hospital inventory and additional material received from external sources in support of the incident
- Organize and manage the deployment of supplementary equipment and supply resources.
- Determine needed resources
- Identify equipment holding areas within Staging Area, as appropriate
- Maintain an organized location and inventory control system
- Report equipment and supply resource inventories to the Planning Section Materiel Tracking Manager
- Assess issues and needs in area; coordinate resource management
- Ensure equipment, supplies, and personal protective equipment (PPE) are available as needed
- Inventory necessary materials; project needs for additional materials
- Establish a contact list with just-in-time supply vendors and contractors, in coordination with the Logistics Section Supply Unit and the Finance/Administration Procurement Unit
- Establish initial inventory of equipment and supplies on hand, including materials that have been received or ordered in support of the incident

Internal and External Communications

- Education of staff
- Hospital lockdown protocols (internal/external)
- Work with local police/fire (active shooter drills)
- Use of Mass Communication Emergency Alert Notifications
 - Everbridge
 - Mobile Heartbeat



Staff roles and response to an active shooter incident: **RUN**

- If there is an accessible escape path, attempt to evacuate the premises
- Do a mental fire drill have an escape route in mind
- How many shooter are there?
- Consider the possibility of explosive devices
- Prior Police/Fire site training

HIDE – BARRICADING OPTIONS

Use body weight or heavy items to secure inward opening doors

Use belts or straps to security outward opening doors

Lash door closer mechanisms

Safe rooms-pagers- cell phones-lights-cover vs concealment



MAHRMM

Michigan Association Healthcare Resource Material
Management

Communication in Crisis

Mary Masson

Michigan Medicine

5/23/19



SOURCE OF TRUTH

In any crisis, it is crucial to limit information to one source of truth.

- In most healthcare settings, a communication lead will be established through an incident command.
- Crucial to work with police, other agencies
- Frequent updates are necessary.

- Social media is a challenge.

CASE STUDY: ACTIVE SHOOTER SCARE at U-M

Popping balloons prompt 3 hours of active shooter panic at University of Michigan

Sarah Rahal, The Detroit News | Published 5:10 p.m. ET March 16, 2019 | Updated 11:17 p.m. ET March 16, 2019

CONNECT TWEET LINKEDIN COMMENT EMAIL MORE



University of Michigan police officers respond with Washtenaw County Sheriff's deputies and the FBI, ATF and U.S. Border Patrol to a report of an active shooter on the University of Michigan campus near Mason Hall in Ann Arbor, Mich., Saturday, March 16, 2019. (Photo: Jacob Hamilton, Ann Arbor News)

University of Michigan law student Sam Rubinstein was attending a campus vigil for victims of the New Zealand mosque shooting Saturday when he heard someone yelling, "MOVE! MOVE!"

He turned to see a police officer running toward the group. Panic set in as the crowd started moving away and up the stairs of the UM Hatcher Graduate Library. He and others he was with ended up huddling in a third-floor bathroom for an hour.

"There could have been no real threat at all or it could have been a very real threat," said Rubinstein, 24, of New Jersey.

MORE STORIES



Southfield Fwy, I-94, Fort Street still flooded
May 2, 2019, 8:57 a.m.

Teen charged with having sex with 13-year-old who gave birth
May 2, 2019, 8:59 a.m.



Supermarket shoplifting cases keep Detroit court busy
May 1, 2019, 11:30 p.m.



Oakland County fears \$2M loss in tax snag
May 1, 2019, 11:30 p.m.



Man on Detroit's 'Most Wanted List' arrested in W.Va.
May 2, 2019, 7:34 a.m.

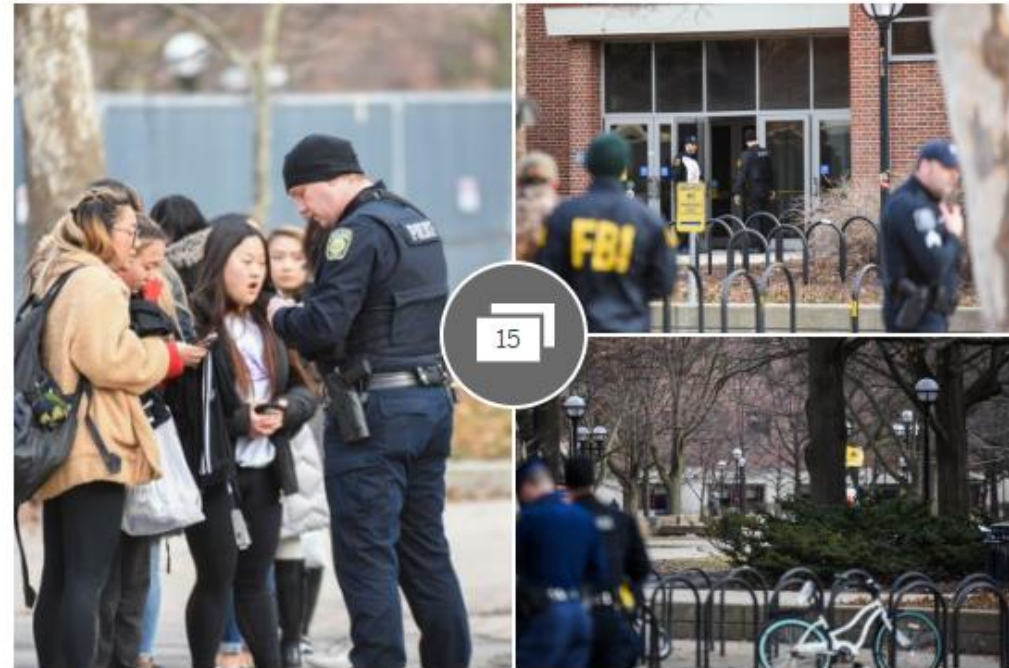


Spranger charged with ATM

ANN ARBOR

University of Michigan sorority apologizes for active shooter scare

Updated Mar 25, 2019; Posted Mar 25, 2019



15

Gallery: Suspected active shooter on campus of University of Michigan

LESSONS LEARNED

- People want and expect information quickly
- Each department wants to put out separate messages to their teams
- People listen to scanner traffic and post it immediately to social media
- Regular updates are needed on social.
- All social accounts go “dark” except for official channels.
- Don’t get out ahead of your chain of command.

SENSITIVITY IN A CRISIS



- Some felt the second picture especially was distasteful in the crisis
- Could have interfered with law enforcement efforts
- Best practice: Don't post in the midst of things.